

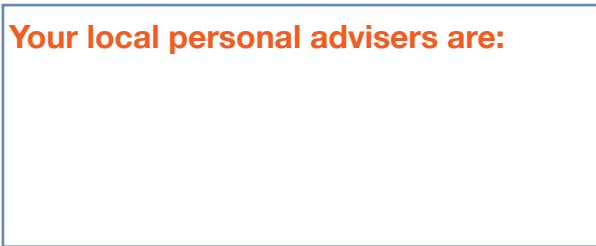


For more information:

- Drop into your nearest **Connexions** or **young people's centre**
- Phone **0800 9755111**
- Visit **www.connexions-cd.org.uk**

Activity Agreement

Your local personal advisers are:



16-17?

Out of **work,**
education
or **training?**

Careers South West Ltd is committed to safeguarding and promoting the welfare of children, young people and vulnerable adults and expects all employees and volunteers to share this commitment.

Careers South West Ltd is committed to improving its products and services. If you have any comments or complaints please contact the Head of Quality, Contracts and Adult Services at Careers South West Ltd, Tamar Business Park, Pennygillam Industrial Estate, Launceston, PL15 7ED.

This publication can be made available in large print, Braille, audio cd or in languages other than English. Please contact Careers South West Ltd on 01566 777672.

You could **earn** up to **£600** while you:

- gain qualifications
- meet new people
- gain confidence and support
- enjoy yourself.



Activity Agreement is managed by Careers South West Ltd. Our purpose is to engage all of our customers in learning and work.



Can I take part?

Are you:

- › aged 16 to 17?
- › unemployed, out of education or training for some time?
- › keen to try new things?
- › bored at home?

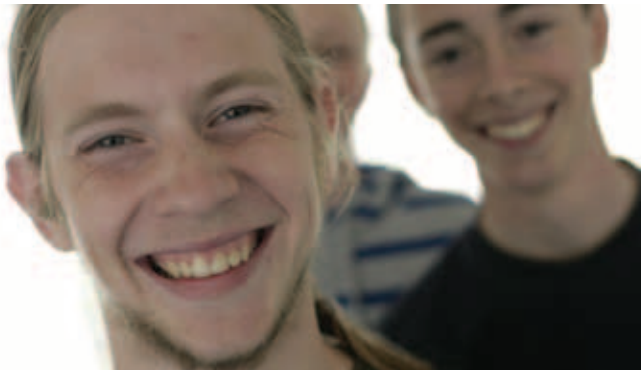
If you answer yes to all of the above, then **YES** you should be able to take part!

If you're claiming Jobseekers' Allowance (JSA) then you can start straight away. If not, you will need to have been unemployed, out of education or training for either 6 or 26 weeks depending on your circumstances.

Why should I take part?

You could:

- › earn up to £600 over 20 weeks at £30 per week
- › try new activities - Sport! Music! Arts! Work tasters!
- › improve your interview skills and CV
- › gain qualifications, e.g.:
 - English, Maths, IT
 - Sports Related
 - First Aid, Food Hygiene
 - Driving Theory
- › feel better, gain confidence and have support with personal issues
- › meet new people and have fun
- › get weekly one to one support to work through problems and help move you forward
- › get support as you move into education, employment or training.



Pathways
to **success**